



Exhibition spaces of the 2023 Biennial

The venue: Motoco



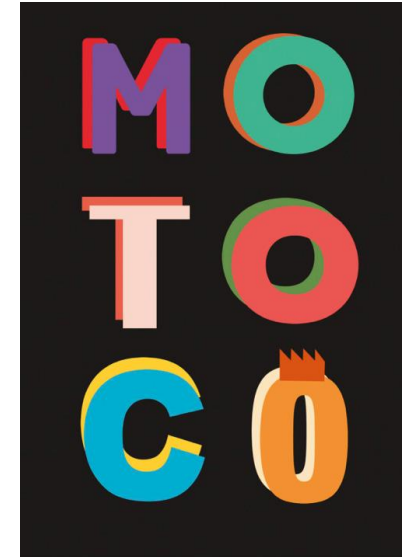
Motoco is placed in an industrial building (building 75), almost 9000m², located in the heart of an industrial site in complete renewal in Mulhouse. Motoco is a working place, an artistic, cultural and multidisciplinary space, with almost 140 resident artists and craftspeople who experiment every day new ways of living their creative activity, by pooling tools, knowledge, material resources or humans, in the collective interest.

By advocating artistic eclecticism and the diversity of audiences, Motoco provides their resident with private workshops at very reduces prices and shared spaces and tools for creation and conviviality. Space of social, artiste, cultural, economic and unique urban experiences in Alsace, Motoco is a community that ventures into new forms of expression and collaboration, choosing openness and diversity rather than withdrawal.

Involved in support and development of artistic and creative activities for the common good, heritage conservation and transformation of industrial wasteland, Motoco wants to develop the partnerships established for nearly 3 years, to perpetuate its action in favor of the territory, and to place sustainably this site as reference in the economic, cultural and identity cooperation of the south Alsace, at the heart of the three border region and of Europe.

Motoco hosts a dozen nationalities (30% of foreigners), an incubator managed by the HEAR (Haute Ecole des Arts du Rhin), foreign residents managed by the Kunsthalle (art center of Mulhouse), an image pole, a screen printing pole, a carpentry area and two large spaces for events.

The building 75, which houses the motoco project, has three floors with different activities:
Ground floor : two rooms for events (capacity of 1200 people) and image and screen printing poles
First and second floor : 92 workshops from 10 to 200m²



Ground floor



Two large factory halls punctuated by support posts (approximately every 6m) and equipped with large glass surfaces, concrete floor (no drilling possible), ceiling at 4.80m under IPN)

Total surface area :

The large hall: 1200 m²

The small hall: 550 m²

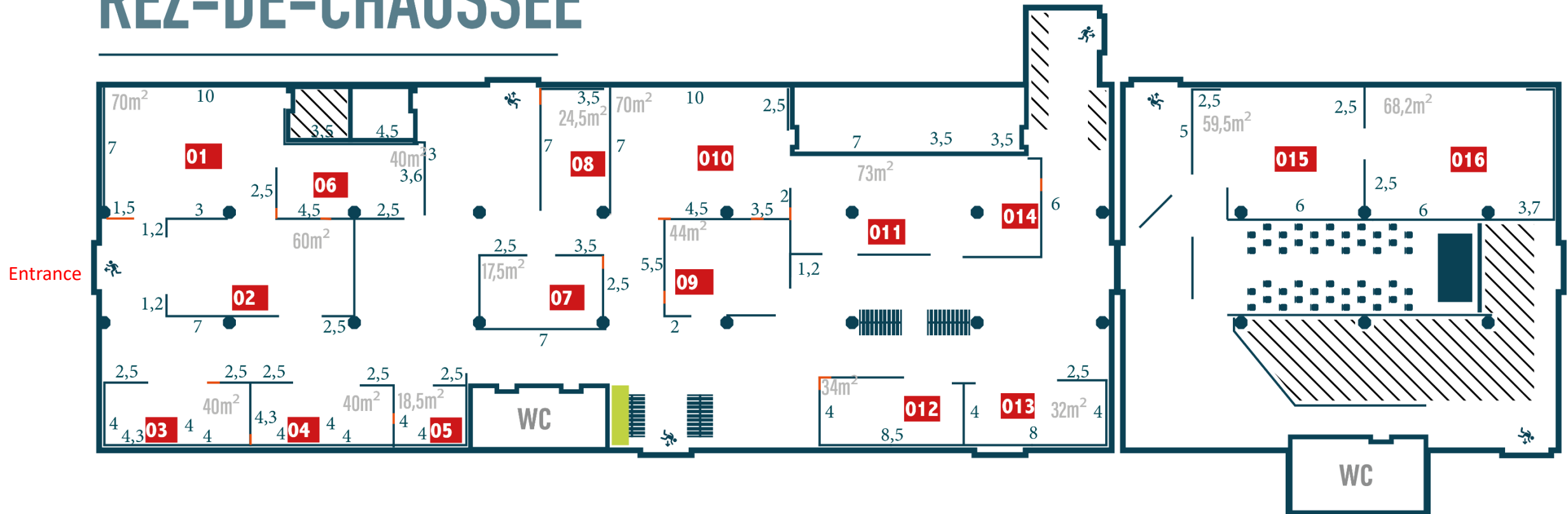


Ground floor



Areas between 20 and 70 m² that can be slightly adjusted to the specific needs of the exhibition.
The outside walls have a **large number of windows which are not partitioned off (no hanging possible on these surfaces).**

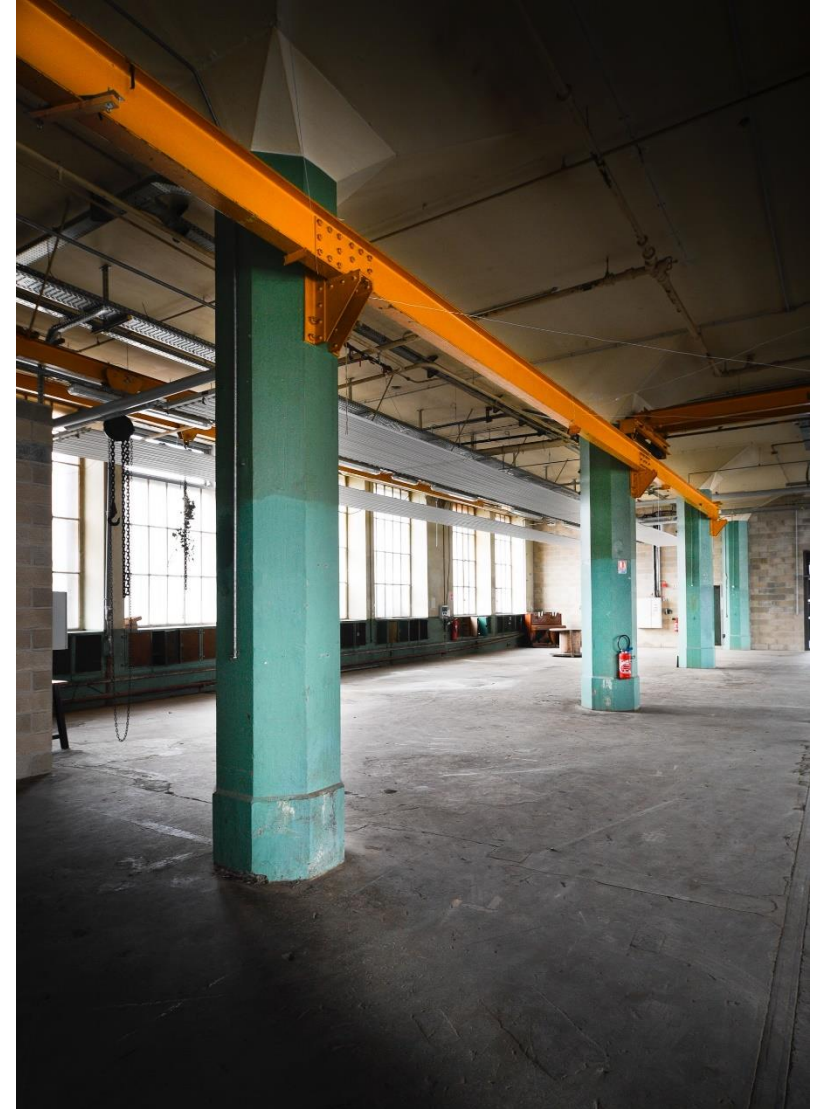
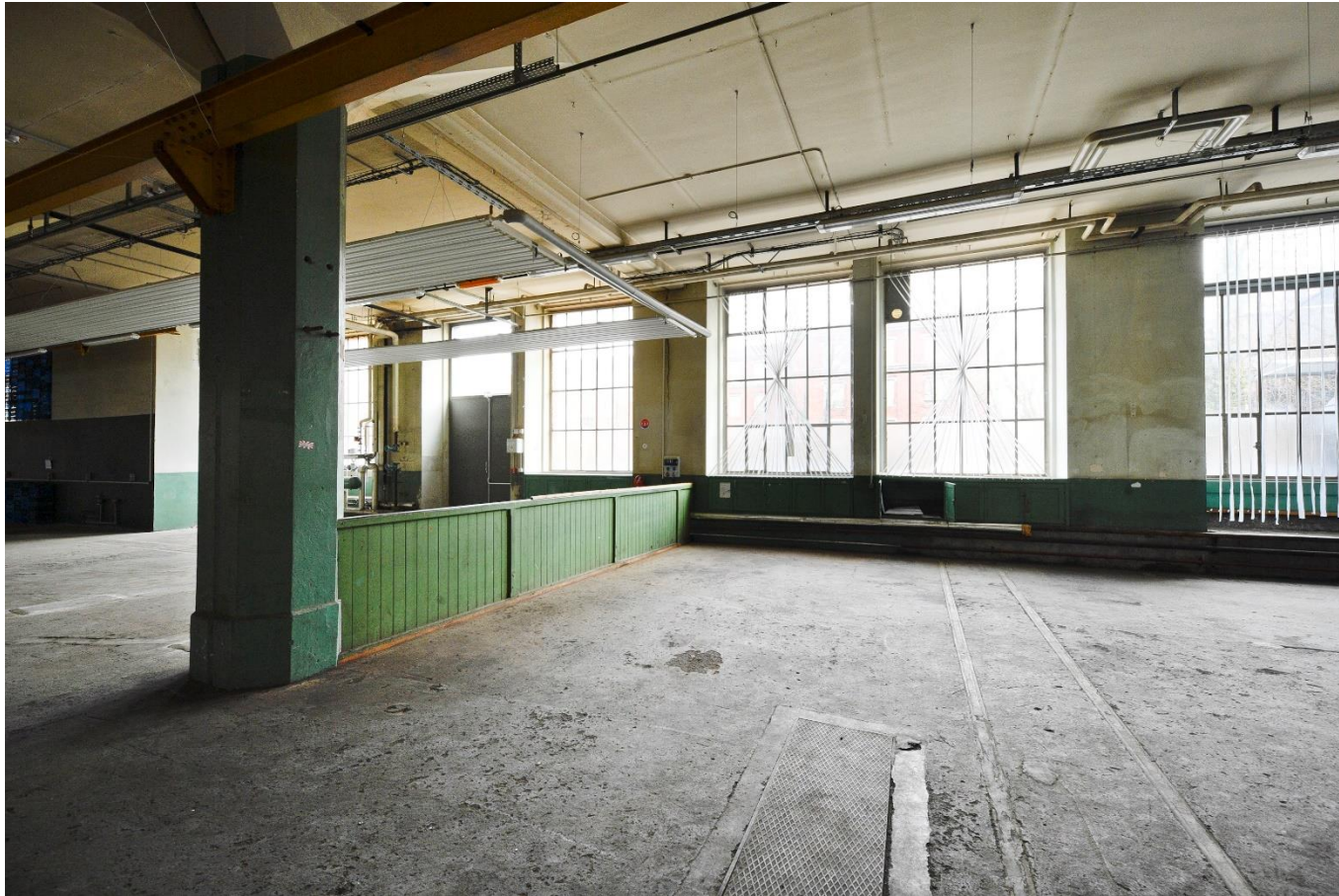
REZ-DE-CHAUSSÉE



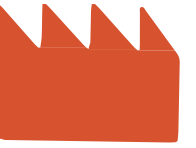
Ground floor



Examples of rough spaces before partitioning :



Ground floor



Examples of partitioning of the 2021 Biennial :



First floor



Principle:

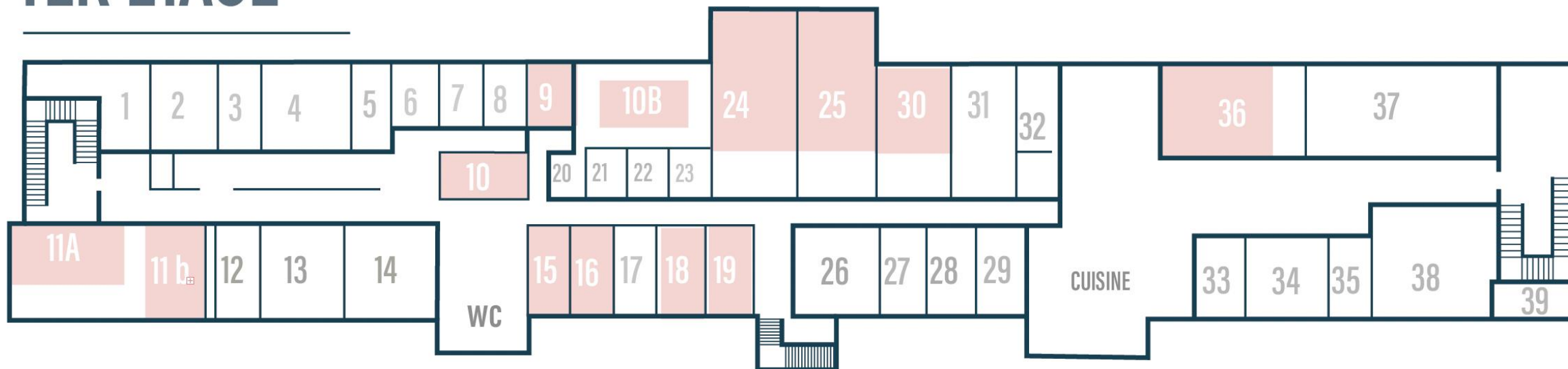
Studios made available by the permanent resident artists of Motoco. These studios are each unique in terms of :

- Surface
- Light
- Equipment
- Nature of the walls and floors

They will be largely emptied of the occupying artists' belongings, but the identity of the person who works there on a daily basis may still be perceptible and it will be necessary to deal with this constraint.

The studios on the 1st floor made available to the Biennial 023 are in pink :

1ER ÉTAGE



First floor



Studio 9 :

Surface area: 20 m2

Walls :

2 white walls for hanging

1 white wall with entrance door

1 wall with window

Available empty. Possibility of a central table (see photo)



First floor



Studio 10 :

Surface area: 30 m²

Blind room (just three skylights overlooking the interior that can be blocked)

Linoleum floor

Walls :

4 white walls allowing for hanging, one of which has an entrance door and skylights above

Available empty.



First floor



Studio : 10B

Surface area: 40 m²

Floor: raw MDF

Walls :

2 rough plasterboard walls that
can be painted and allow for
hanging

1 wall with windows

1 wall with 3 glass doors

Available empty.



First floor



Studio : 11A

Surface area: 35 m2

Rehearsal room of a recording studio

Parquet floor

Walls :

3 white and wooden walls with absorbers that cannot accommodate hanging
1 glass wall

Available empty.



First floor



Studio : 11B

Surface area: 30 m2

Parquet floor

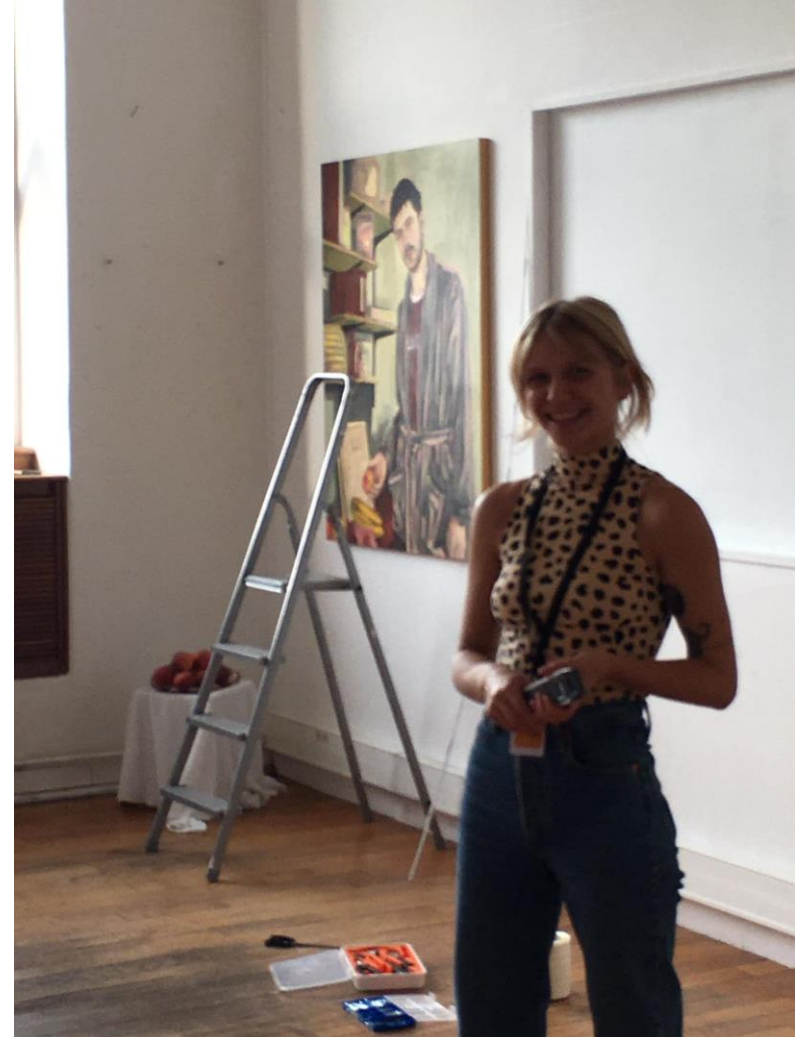
Walls :

2 white walls for hanging

1 white wall with entrance door

1 wall with window

Available empty.



First floor



Studio : 15

Surface area: 29 m²

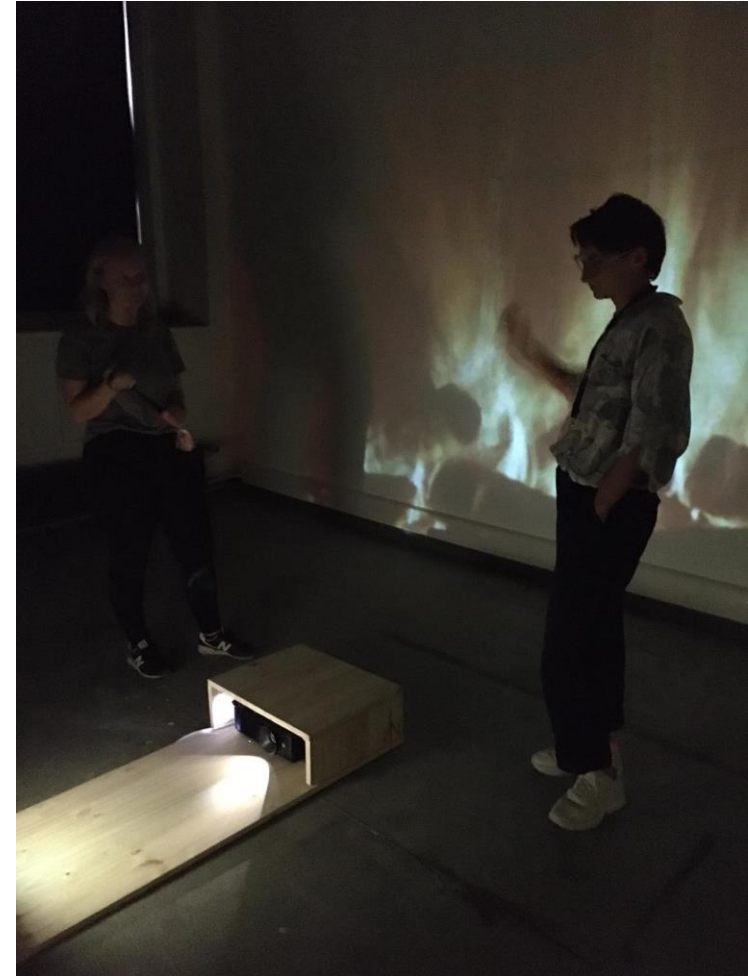
Blind room

Floor : linoleum

Walls :

3 white walls, two of which can be hung or projected

Available empty.



First floor



Studio : 16

Surface area: 30 m2

Blind room

Parquet floor

Walls :

2 white walls for hanging

Available empty.



First floor



Studio : 18

Surface area: 30 m²

Floor in linoleum

Walls :

2 white walls for hanging, one
with a door at the end

1 window wall

1 white wall with central door

Available empty.



First floor



Studio : 19

Surface : 30 m²

Floor : linoleum

Walls :

- 2 white walls for hanging, one with a door at the end
- 1 window wall
- 1 white wall with a central door

Available empty.



First floor



Studio : 24

Surface area: 50 m²

Floor in linoleum

Walls :

2 white walls for hanging

1 black curtain wall

1 narrow return wall with green
or black background

Provided empty until the
curtain.



This floor today :

First floor



Studio : 25

Surface area: 70 m²

Floor in raw MDF

Walls :

1 white wall with red structure
(see photo)

1 black wall

1 wall with windows

1 glass wall with entrance
passage

Available empty



First floor



Studio : 30

Surface area: 49 m2

Floor in raw MDF

Walls :

1 white wall with red structure
(see photo)

1 white wall

1 wall with windows

1 wall with low furniture
remaining in place.

Available with furniture



First floor



Studio : 36

Surface: 35 m2 (partial workshop)

Concrete floor

Walls :

2 white walls

1 white wall

1 wall with windows

1 wall with curtains

Available empty

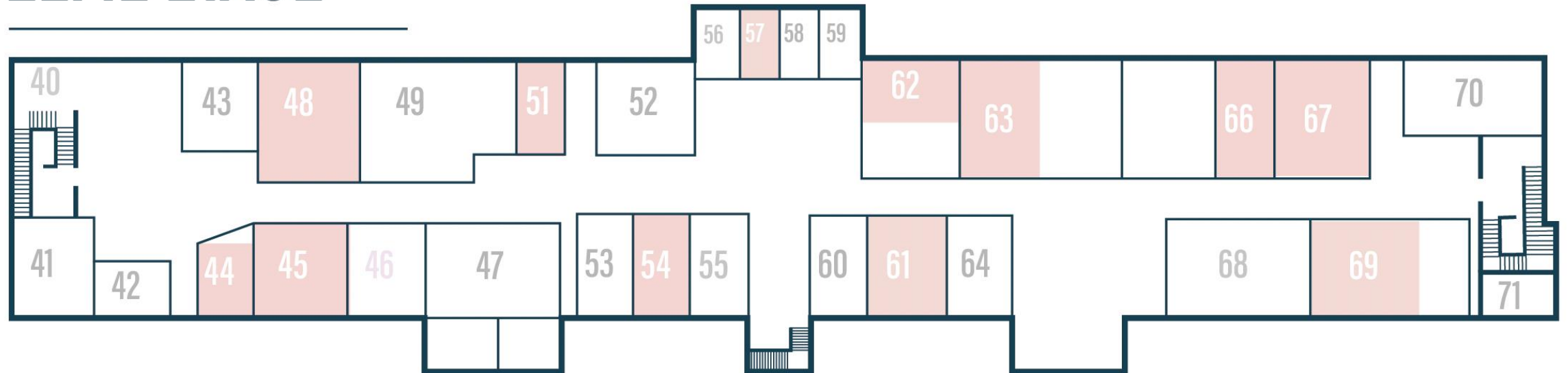


Second floor



2nd floor studios available for the Biennial 023 (in pink):

2ÈME ÉTAGE



Second floor



Studio : 44

Surface area: 31 m2

Concrete floor

Walls :

1 white wall

1 wall with windows

1 wall with interior windows
covered with white panels
(photo)

Provided empty



Second floor



Studio : 45

Surface area: 54 m2

Concrete floor

Walls :

1 wall with furniture and hanging plate

1 wall with windows

1 partitioned space with blank walls inside and outside

Provided with fixed furniture



Second floor



Studio : 48

Surface area: 68 m2

Concrete floor

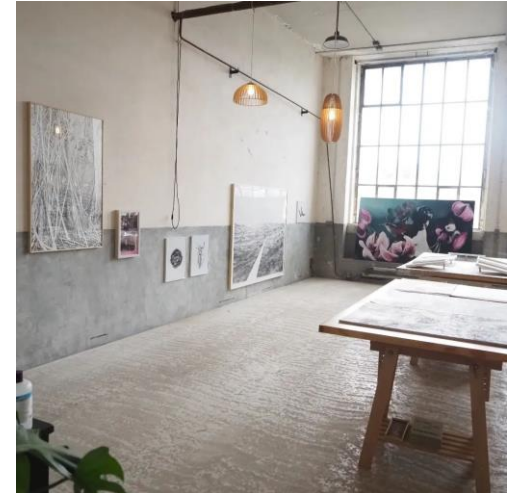
Walls :

1 white wall

1 wall with windows

1 wall with white painted windows

Available empty



Second floor



Studio : 51

Surface area: 32 m²

Concrete floor

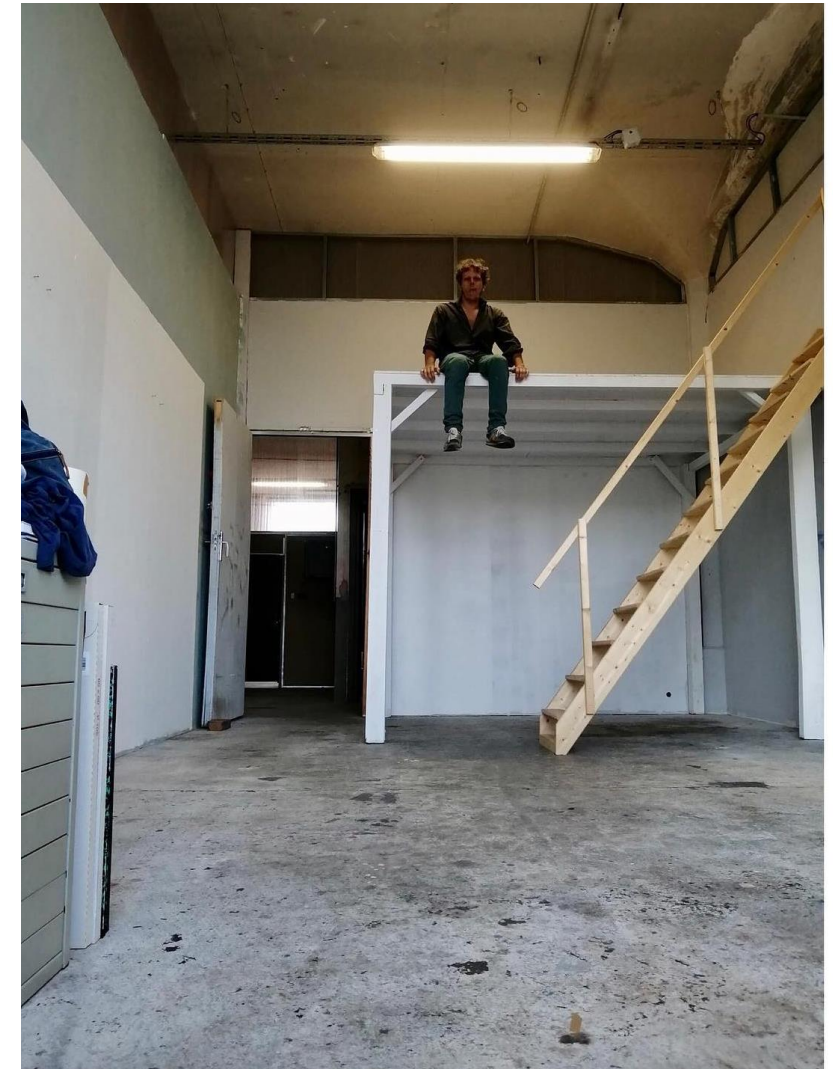
Mezzanine (height not usable)

Walls :

2 walls in rough plasterboard

1 wall with windows

Available with fixed mezzanine



Second floor



Studio : 54

Surface area: 35 m²

Concrete floor

Walls :

2 walls in rough plasterboard

1 wall with windows

1 wall in rough plasterboard
with central door

Available empty



Second floor



Studio : 57

Surface area: 18 m2

Floor in lino

Walls :

1 wall with shelves

1 wall with windows

1 white wall

Available with fixed furniture
(shelves)



Second floor



Studio : 61

Surface area: 57 m2

Concrete floor

Walls :

1 white brick wall with low box

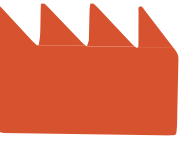
1 wall with windows

1 rough plasterboard wall

Available empty or with
furniture



Second floor



Studio : 62

Surface area: 74 m2

Concrete floor

Walls :

2 white walls

1 wall with windows

1 wall with white screens (no hanging possible)

Available empty or with furniture



Second floor



Studio : 63

Surface area: 90 m2

Concrete floor

A part of the workshop
including the mezzanine will be
cut (on the right on the picture)
and hidden by a black curtain.

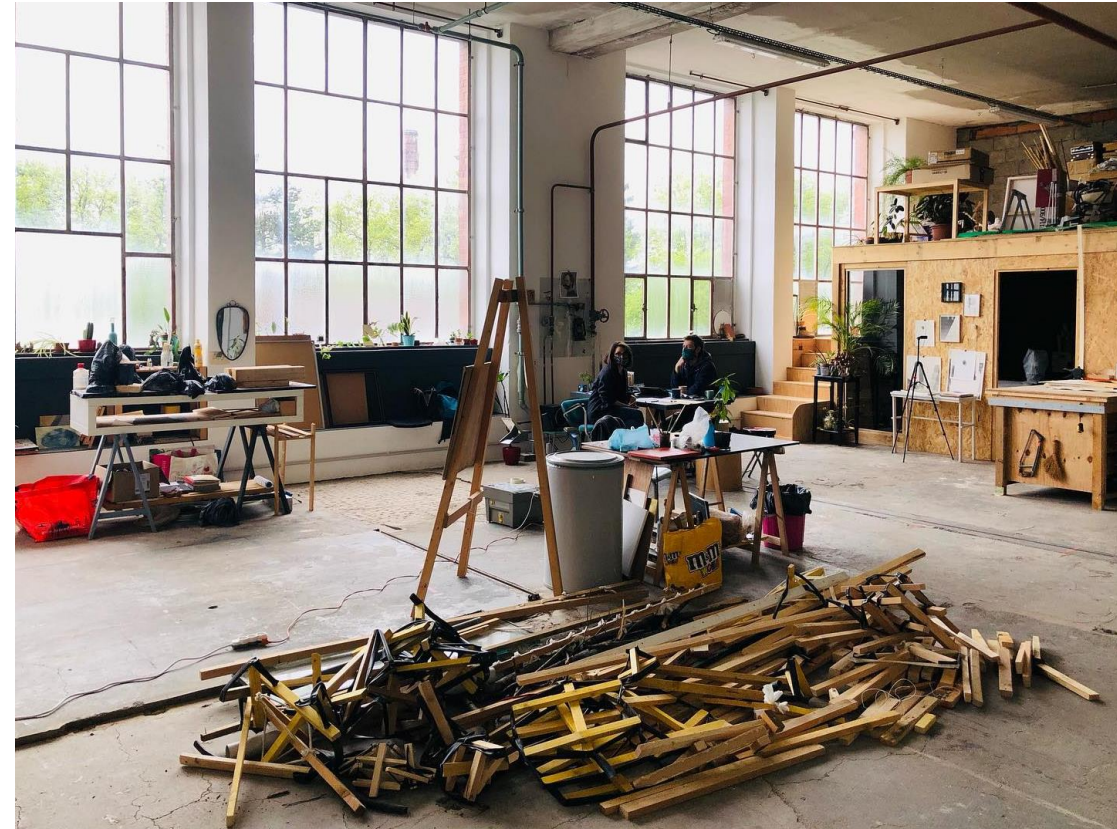
Walls :

2 white walls

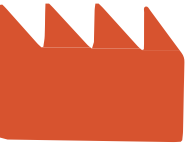
1 wall with windows

1 wall with windows

Available empty.



Second floor



Studio : 66

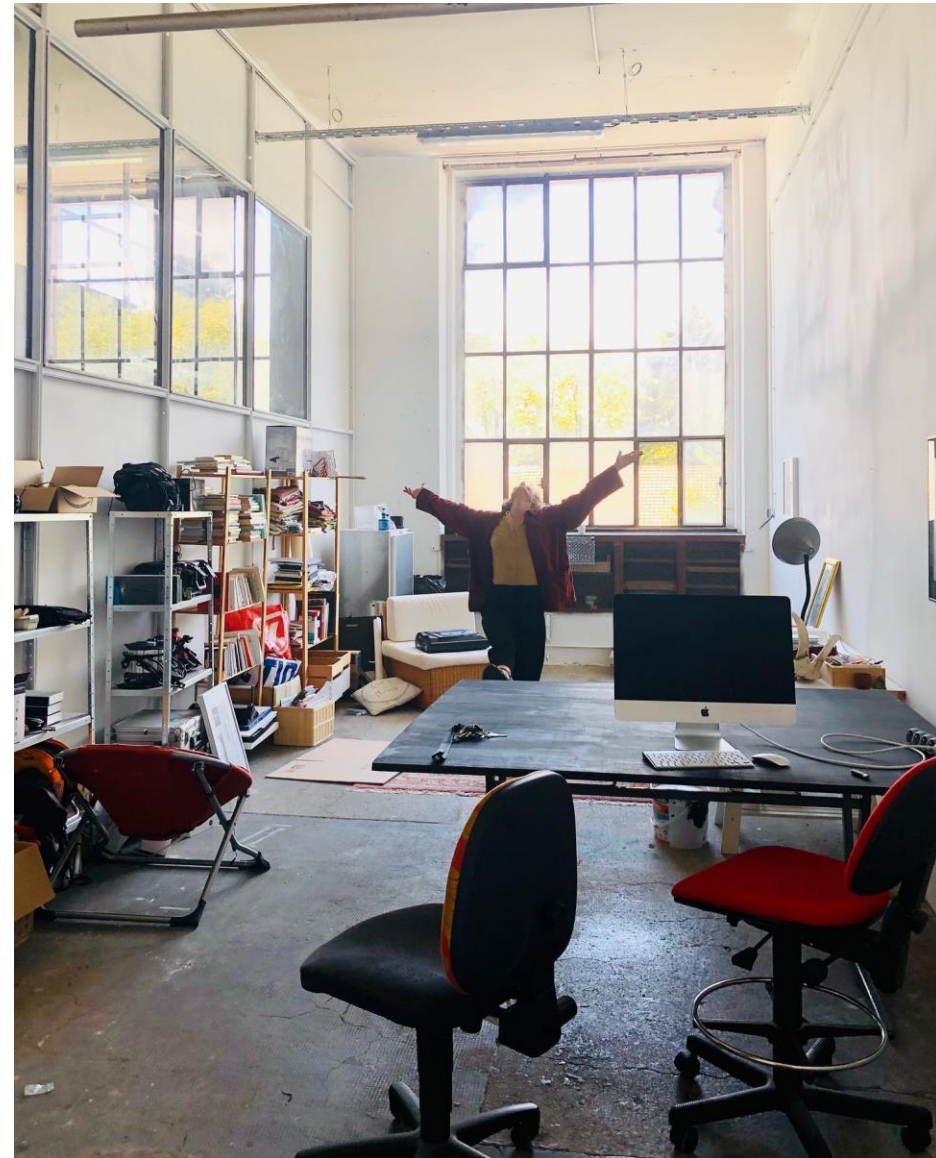
Surface area: 33 m2

Concrete floor

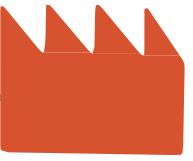
Walls :

- 1 white wall
- 1 wall with interior windows
- 1 wall with windows
- 1 wall with central door

Available empty.



Second floor



Studio : 67

Surface area: 66 m²

Concrete floor

Fixed post inside the workshop

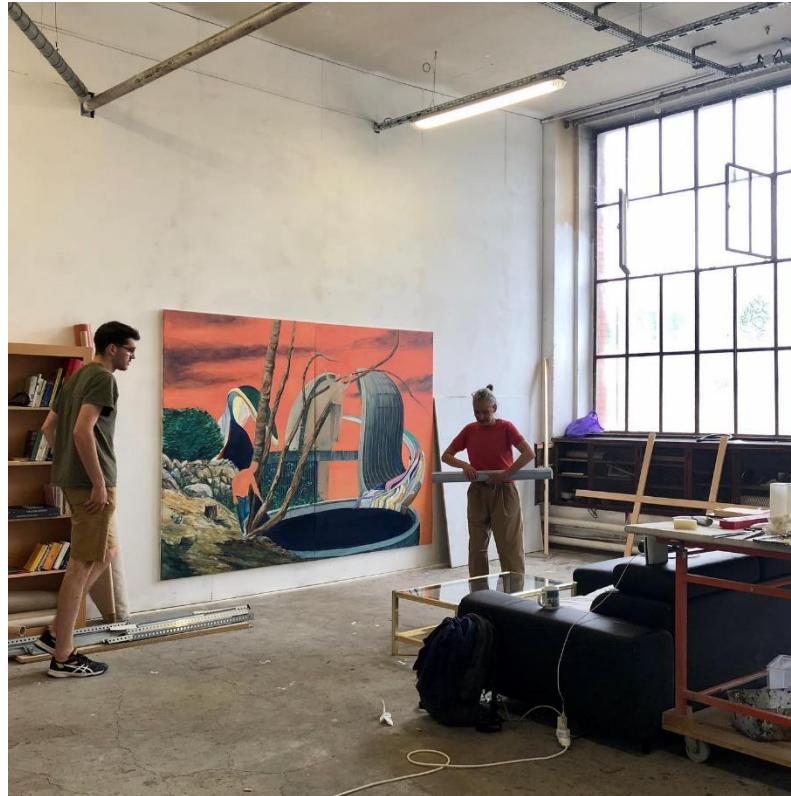
Walls :

2 white walls (glazed overhead)

- 1 wall with windows

1 wall with central door

Available empty.



Second floor



Studio : 69

Surface area: 65 m²

Concrete floor

Walls :

3 rough plasterboard walls (up to 2m high)

- 1 wall with windows

Available empty.

